

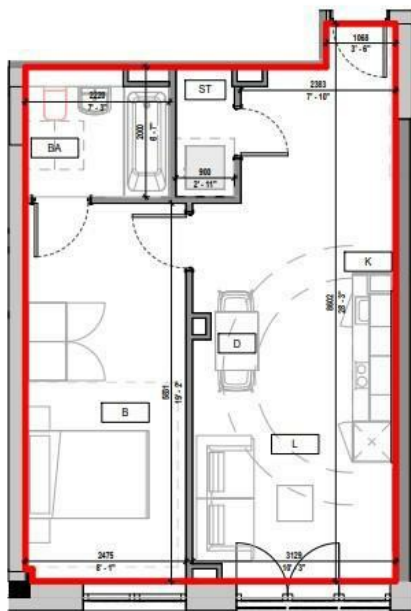
**FLAT 124 SPRINGWELL GARDENS, WHITEHALL ROAD**  
**LEEDS, LS12 1FH**

**£1,100 PER MONTH**

Discover the epitome of urban living with our sleek and contemporary 470 sqft apartment, available now in the heart of Leeds City Centre.

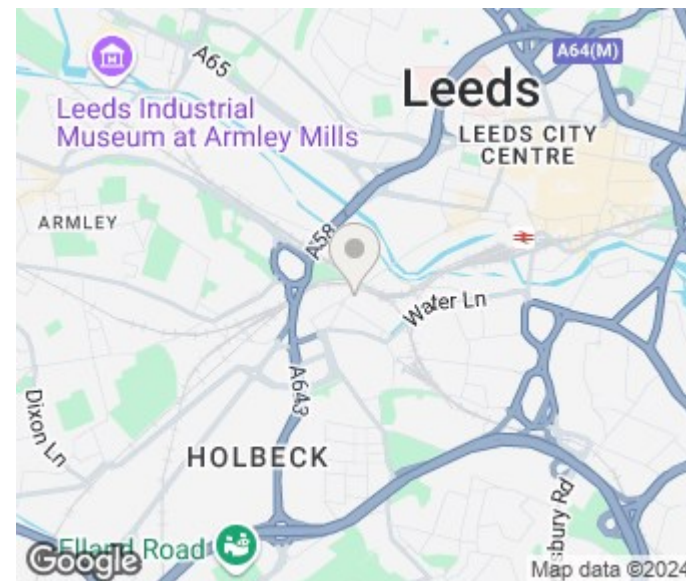
**M O N R O E**

SELLERS OF THE FINEST HOMES



Note: Apartment Area and dimensions subject to Detailed Design and Construction tolerances

Springwell Gardens  
Apartment - A715



Energy Efficiency Rating		
	Current	Potential
Very energy efficient - lower running costs		
(92 plus) A	87	87
(81-91) B		
(69-80) C		
(55-68) D		
(39-54) E		
(21-38) F		
(1-20) G		
Not energy efficient - higher running costs		
England & Wales	EU Directive 2002/91/EC	

Agents Note: Whilst every care has been taken to prepare these particulars, they are for guidance purposes only. All measurements are approximate and are for general guidance purposes only and whilst every care has been taken to ensure their accuracy, they should not be relied upon and potential buyers/tenants are advised to recheck the measurements

Monroe Lettings and Property  
Management  
Springwell Gardens Leeds  
LS12 1AF

0113 350 0866  
hello@monroelettings.com

MONROE

SELLERS OF THE FINEST HOMES